

CAMANA SERIES

STANDARD CONSTRUCTION:

SUNSHADE & LIGHTSHELF FRAME:

2 1/4" x 2 1/4" Square .081" Extruded Aluminum Tube
 Frame With Recess For Sunshade and Lightshelf Skins
 2" x 2" Square .081" Extruded Aluminum Mid-Support Tubes

SUNSHADE & LIGHTSHELF SKINS:

.0253" (22 Gage) Minimum To .25" (2 Gage) Maximum
 Solid Or Perforated Aluminum Sheetting
 (48" x 120" Maximum Single Sheet Size)
 (Thinner Gages May Require More Mid-Support Tubes)
 Standard Perforation Pattern Will Be 5/16" Round Holes
 Staggered On 1/2" Centers
 CONSULT FACTORY FOR ADDITIONAL PERFORATION
 SHAPES, PATTERNS, AND SIZES

FINISH:

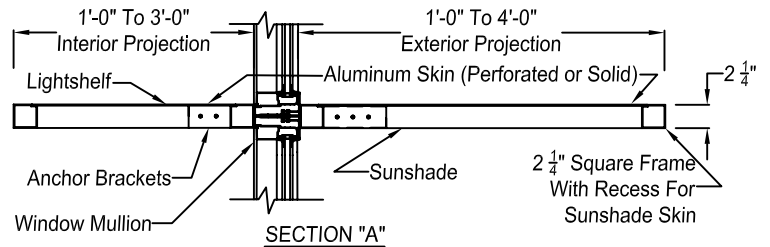
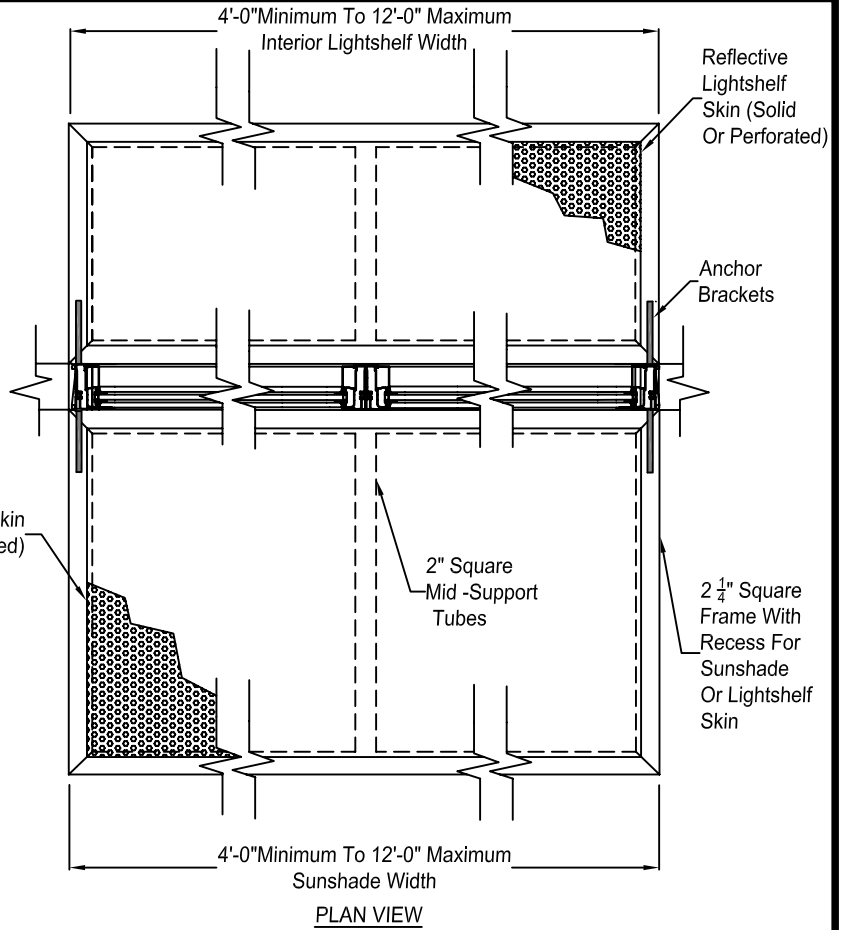
mill aluminum (std.)

MAXIMUM SIZE:

SUNSHADE: 12" Minimum, 48" Maximum Projection
 48" Minimum, 120" Maximum Width
 LIGHTSHELF: 12" Minimum, 36" Maximum Projection
 48" Minimum, 120" Maximum Width

OPTIONAL FINISHES:

- Powder Polyester TGIC** (2 coats) baked on at 410°F
 -2.5 to 3.5 mils Meets AAMA-2603 Standards
 - Powder Super durable polyester** (2 coats) baked on at
 410°F -2.5 to 3.5 mils Meets AAMA-2604-05 Standards
 - Acrylic baked enamel** (ACRA-BOND® ULTRA)
 by AkzoNobel baked on at 350°F -0.8 to 1.2 mils dry
 Meets AAMA-2603 Standards
 - Kynar®** (ALUM*A*STAR®) 2 coats
 by AkzoNobel baked on at 450°F -1.2 to 1.6 mils dry
 Meets AAMA-2604-05 Standards
 - Kynar 500®** or **HYLAR® 5000** 70% **TRINAR®** (2 coats) by
 AkzoNobel baked on at 450°F -1.2 to 1.6 mils dry, Meets
 AAMA-2605-05 Standards
 - Kynar 500®** or **HYLAR® 5000** (70% Tri-Escent II)
 (2 coats) by AkzoNobel, a superior finish to other metallic or
 anodized finishes. A blend of mica, ceramic, and inorganic
 pigments creates subtle yet dazzling design that goes
 beyond metallic color without the requirement of a clear
 coat. 14 standard colors - custom colors available. Baked
 on at 415°F -1.4 to 1.8 mils dry, meets AAMA 2605-05.
 - Clear Anodize Match** (paint meets AAMA 611)
 - Integral Color Anodize Match** (paint meets AAMA 611)
- Clear coat available for all above finishes.
 - Hylar® 5000 is a registered trademark of Solvay Solexis, Inc.
 - Kynar® 500 is a registered trademark of Arkema.
 - ALUM*A*STAR® 50 and TRINAR® are registered trademarks of AkzoNobel
 - ACRA-BOND® ULTRA is a registered trademark of AkzoNobel



3 part specifications - see online at www.unitedenertech.com



Due to continuing research, United Enertech reserves the right to change specifications without notice.

PROFILE NUMBER	HEIGHT	LENGTH	TAG



3005 South Hickory Street
 Chattanooga, Tennessee 37407
 Tel: (423) 698-7715
 Fax: (423) 698-6629
www.unitedenertech.com

CAMANA SERIES

DRAWN BY: GDR	DATE: 3-1-10	REV. DATE: 1-11-13	REV. NO. 2	APPROVED BY: BGT	DWG. NO.: C-16
------------------	-----------------	-----------------------	---------------	---------------------	--------------------------