

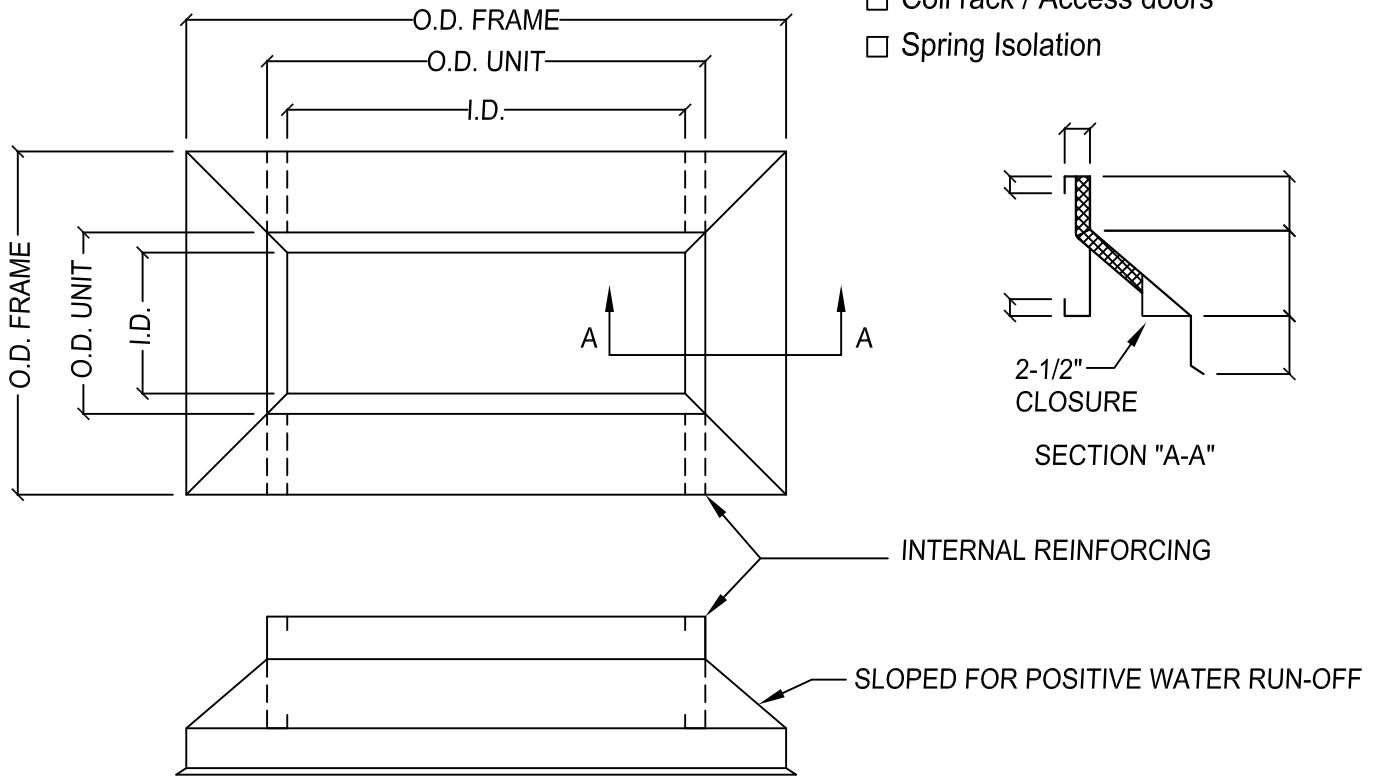
HVAC CURB ADAPTER

Standard Features:

1. 14 Ga. Galvanized steel construction
2. Fully mitered corners, welded watertight
3. Internally reinforced to support equipment load
4. Fully insulated with 1" black duct liner insulation

Options:

- R/A & S/A Transitions
- Duct Supports
- Complete range of sizes and options available for any HVAC unit change out
- Electrical service access
- Power exhaust
- Coil rack / Access doors
- Spring Isolation



Due to continuing research, United Enertech reserves the right to change specifications without notice.

No. Required	O.D. FRAME	O.D. UNIT	MODEL #	Tag - Description

Job Name:	<input type="checkbox"/> HVAC CURB ADAPTER		
Location:			
Architect:			
Engineer:	DRAWN BY: CLJ	DATE: 9-8-03	REV. DATE: 1-4-11
Contractor:	REV. NO. 6	APPROVED BY: CY	DWG. NO.: M-12