

Standard Construction:

- Sleeve: 3/16" thick cold rolled steel, 16" Length (std.)
- Bars: C1018-Steel 1/2" dia. 6" on centers
 both ways- welded at all intersections
- Angle: 1-1/2"x1-1/2"x1/4" steel (shipped loose)
- Finish: Powder coated gray
- All Welded Construction

Options:

A. Material

- Stainless Steel

B. Sleeve

- 10 GA. Steel
- 12 GA. Steel
- Other

C. Angles

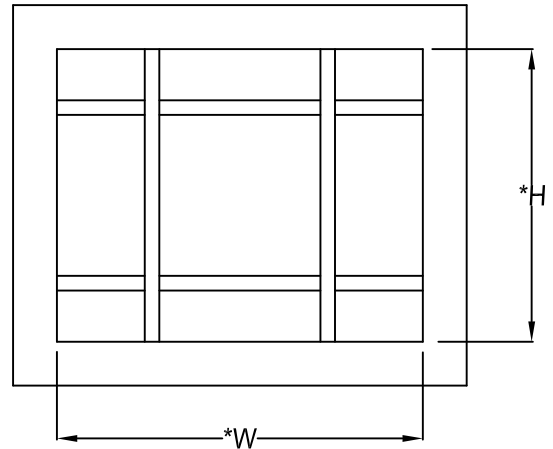
- Welded to one side of sleeve (advise spacing)
- Welded to both sides of sleeve (advise spacing)

D. Bars

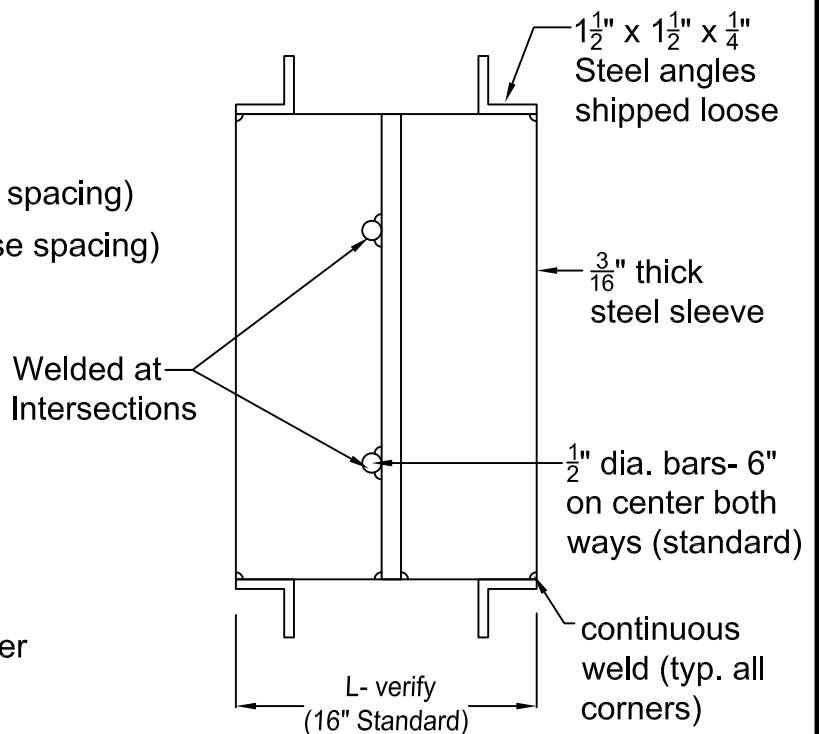
- 3/4" dia C-1018 Steel
- 7/8" dia. C-1018 Steel
- 1/2" x 1" horizontal flat steel
 bars on 6" centers

E. Finish

- Baked Powder Epoxy-U.E Std. Color
- Crystal White-Baked Powder Polyester
- Other _____



* Width & Height dimensions are approx. 1/4" under listed size



Due to continuing research United Enertech reserves the right to change specifications without notice.

Job Name:	<input type="checkbox"/> MODEL BB-S		
Location:			
Architect:			
Engineer:	DRAWN BY: MHM	DATE: 11-17-09	REV. DATE: 2-21-11
Contractor:	REV. NO. 3	APPROVED BY: BGT	DWG. NO.: K-2