

Standard Construction

- Frame: 12 Ga. Galvanized Steel
- Door: 12 Ga. Galvanized Steel
- Seal: 1/4" Thick Foam Gasket
- Range: Available Factory Preset For Release Pressure of 3" to 8" Water Gauge
- Springs: (2) Coiled Return Springs

Options:

- Insulated (1") Fiberglass/Dual Wall
- Sight Window
 - Single Ply Lexan
 - Double Ply Lexan

These Doors Open In (Negative) Or Open Out (Positive) To Relieve Excessive Pressures.

Standard Sizes

Both Models

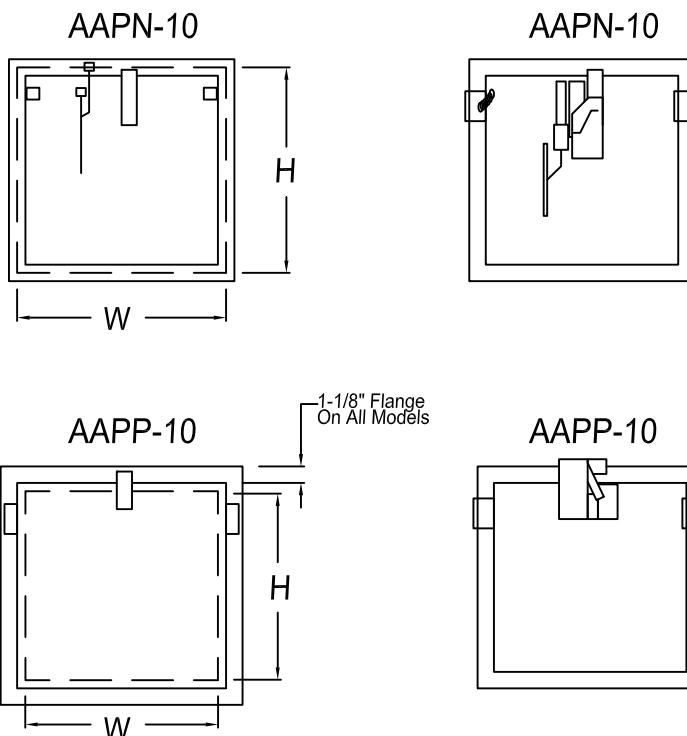
18x18

24x10

24x12

24x24

Consult Factory For Other Sizes



Automatically Resets Upon Return To Set Pressure.

Latch is adjustable- Factory preset (can be adjusted in the field).

QTY	Size		Relief Pressure In. Water Gauge	Options
	W	H		

Due to continuing resarch United Enertech reserves the right to change specifications without notice.

Job Name:	<input type="checkbox"/> AAPN-10 (Negative Pressure Relief)		
Location:	<input type="checkbox"/> AAPP-10 (Positive Pressure Relief)		
Architect:	DRAWN BY: CLJ & RDF	DATE: 8-2-06	REV. DATE: 1-19-11
Engineer:	REV. NO. 5	APPROVED BY: BGT	DWG. NO.: J-4
Contractor:			