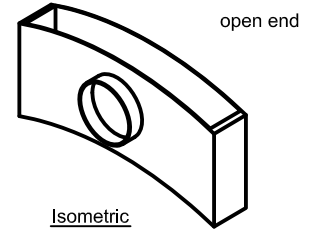
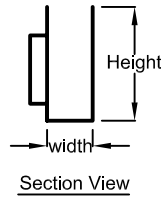
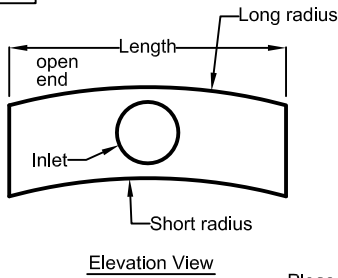


**Curved Plenum Selection
 Types IV, V, & VI**

Note: See DWG H-6 for Oval Inlet Options

Type IV (Inlet perpendicular to radius, Outlet on long radius)



Please Specify:

Radius: _____

Length: _____

Is radius given long or short radius?

Long

Short

Width: _____

Height: _____

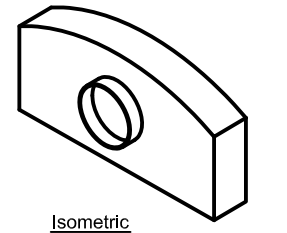
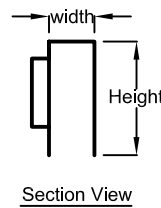
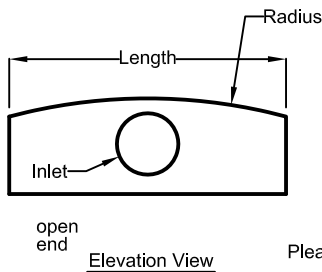
Inlet Ø: _____

of inlets: _____

Note: For more options see DWG NO.: I-2

Note: See DWG H-6 for Oval Inlet Options

Type V (Inlet perpendicular to radius, Outlet on straight end)



Please Specify:

Radius: _____

Length: _____

Width: _____

Height: _____

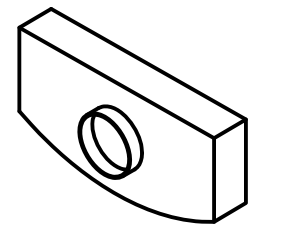
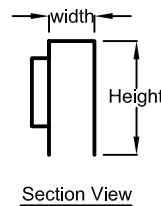
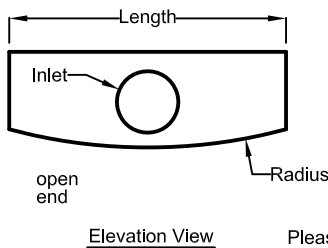
Inlet Ø: _____

of inlets: _____

Note: For more options see DWG NO.: I-2

Note: See DWG H-6 for Oval Inlet Options

Type VI (Inlet perpendicular to radius, Outlet on radius)



Please Specify:

Radius: _____

Length: _____

Width: _____

Height: _____

Inlet Ø: _____

of inlets: _____

Note: For more options see DWG NO.: I-2