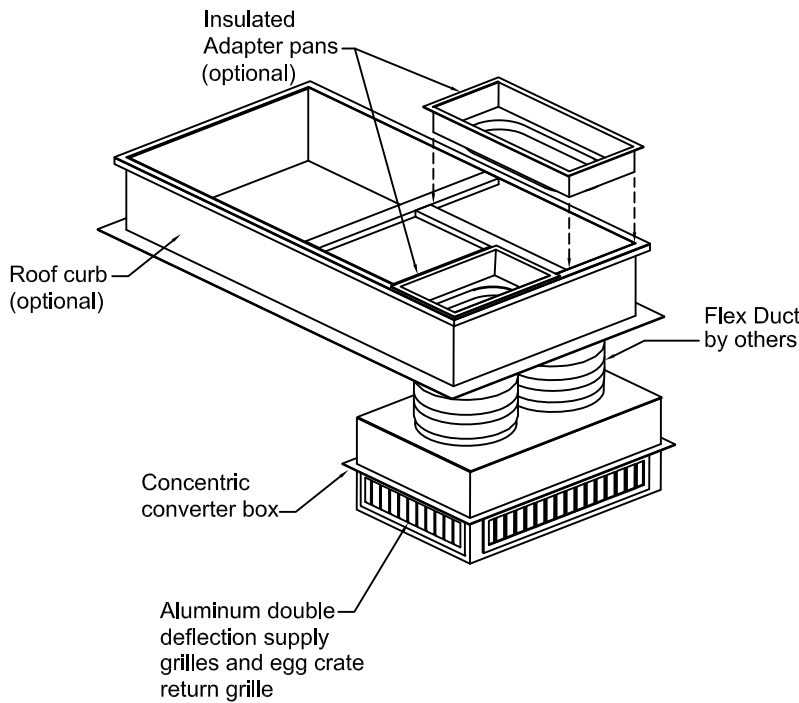
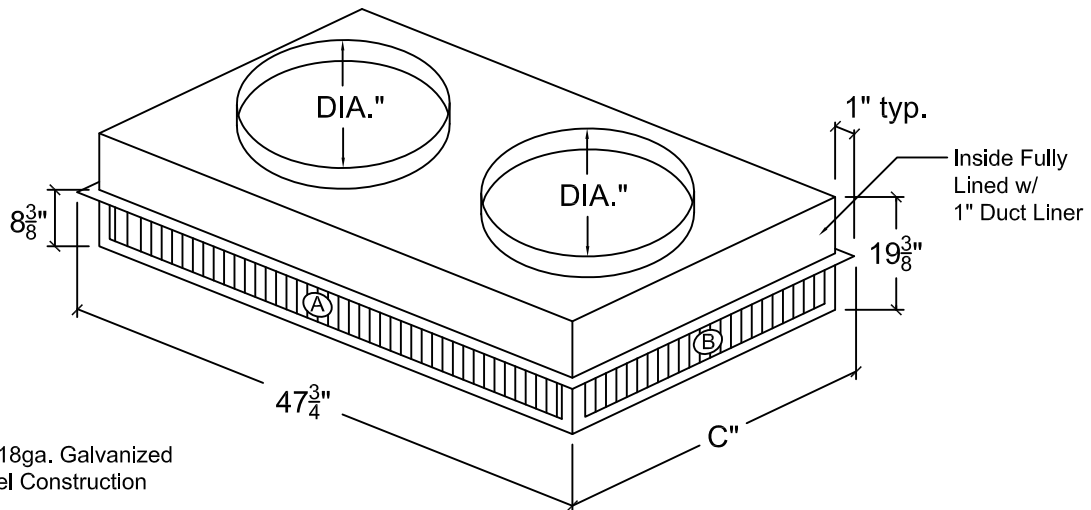
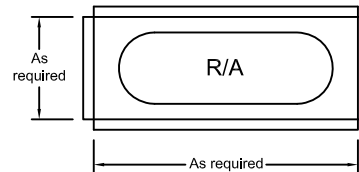
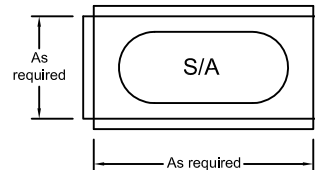


**Drop Diffuser Plenums
Concentric-Supply / Return**



NOTES:

1. Install insulated adapter pans before A/C unit is placed on curb.
2. Field baffles may be required for balancing.
3. Concentric converter box must be field supported.



*All 18ga. Galvanized Steel Construction

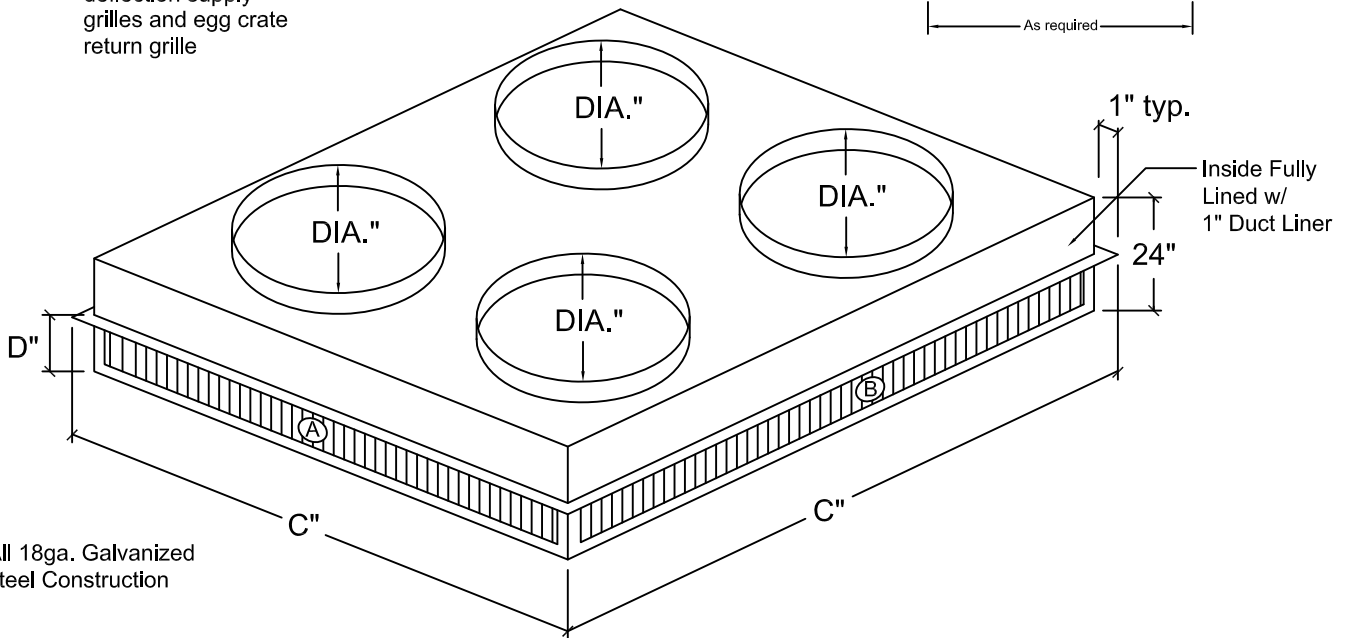
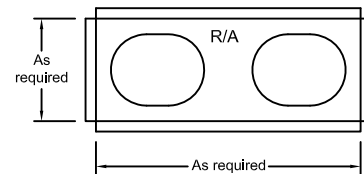
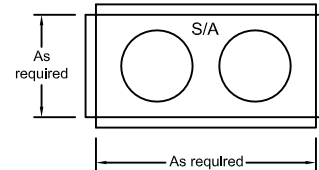
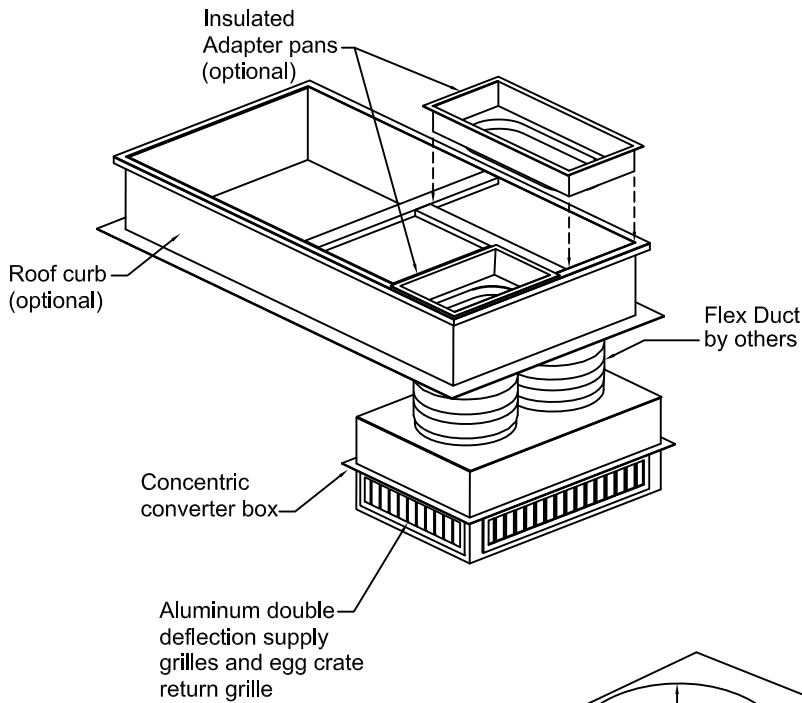
QTY.	MODEL#	"A"GRILLE	"B"GRILLE	"C"	RETURN	DIA.	CFM	THROW	S.P.	N.C.	neck vel.	OPTIONS
	CO-12	42x4	18x4	23-3/4	33x9	14	1,200	11-17	.21	11	1123	
	CO-16	42x4	18x4	23-3/4	33x9	16	1,600	13-22	.21	16	1145	
	CO-20	42x4	18x4	23-3/4	33x9	18	2,000	17-27	.21	24	1132	
	CO-30	42x4	24x4	29-3/4	33x15	20	3,000	23-35	.29	36	1375	

Job Name:	Model CO Concentric-Supply/Return		
Location:	(T-bar grid units)		
Architect:	Drawn By: CLJ	Date: 3-10-03	Rev. Date: 12-1-10
Engineer:	Rev. no.: 7	Approved By: BGT	Dwg. no.: H-9
Contractor:			

**Drop Diffuser Plenums
Concentric-Supply / Return**

NOTES:

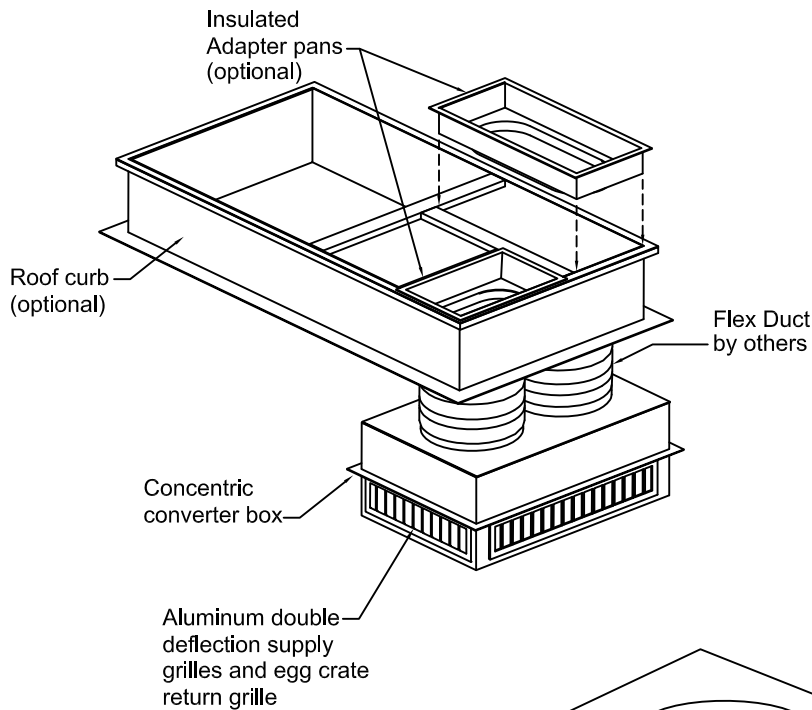
1. Install insulated adapter pans before A/C unit is placed on curb.
2. Field baffles may be required for balancing.
3. Concentric converter box must be field supported.



QTY.	MODEL#	"A"GRILLE	"B"GRILLE	"C"	RETURN	"D"	DIA.	CFM	THROW	S.P.	N.C.	neck vel.	OPTIONS
	CO-40	42x4	42x4	47-3/4	26x26	9-3/8	18	4,000	32-55	.21	31	1132	
	CO-60	40x8	40x8	53-3/4	32x32	13-3/8	20	6,000	35-68	.28	24	1375	
	CO-80	48x8	48x8	59-3/4	38x38	13-3/8	20	8,000	43-80	.50	29	1834	

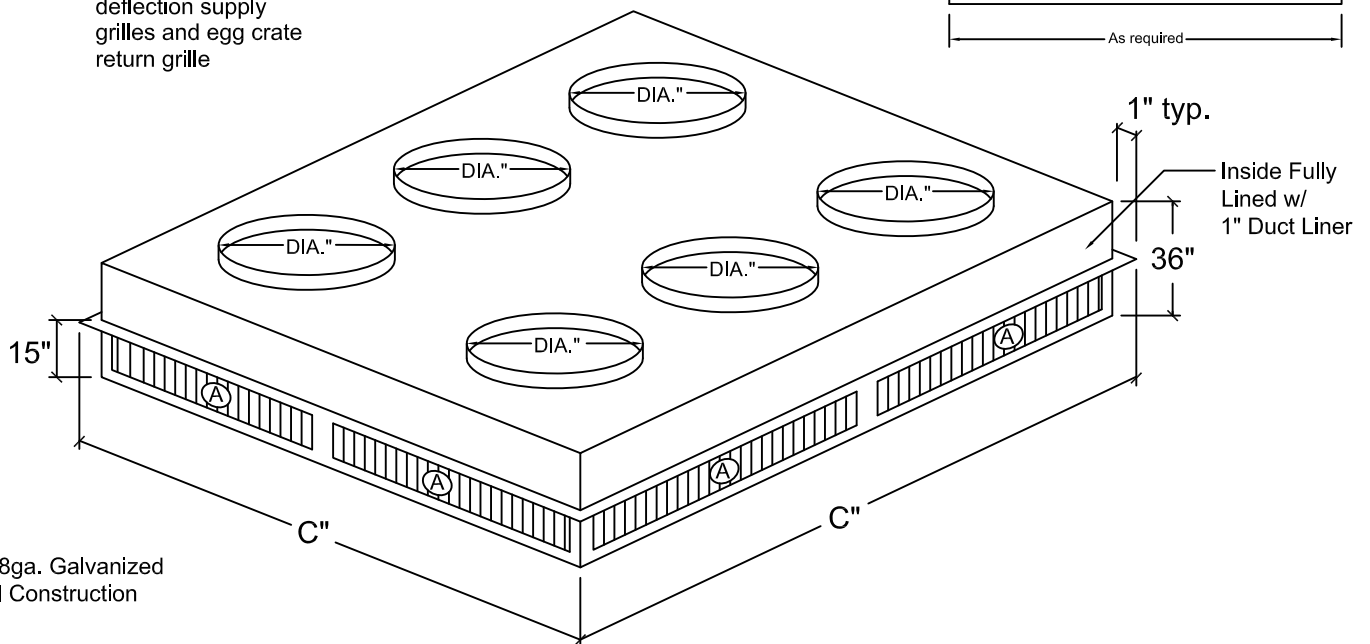
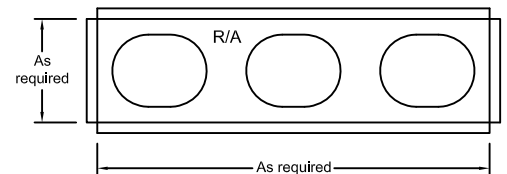
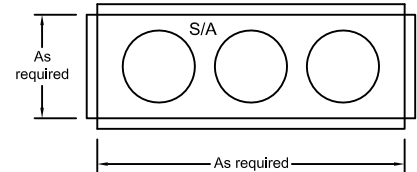
Job Name:	Model CO Concentric-Supply/Return		
Location:	(T-bar grid units)		
Architect:	Drawn By: CLJ	Date: 3-10-03	Rev. Date: 12-1-10
Engineer:	Rev. no.: 7	Approved By: BGT	Dwg. no.: H-10
Contractor:			

**Drop Diffuser Plenums
Concentric-Supply / Return**



NOTES:

1. Install insulated adapter pans before A/C unit is placed on curb.
2. Field baffles may be required for balancing.
3. Concentric converter box must be field supported.



*All 18ga. Galvanized Steel Construction

QTY.	MODEL#	"A"GRILLE	"C"	RETURN	DIA.	CFM	THROW	S.P.	N.C.	neck vel.	OPTIONS
	CO-100	26x12	65-3/4	40x40	20	10,000	30-63	.33	19	1528	
	CO-120	28x12	65-3/4	44x44	20	11,000	27-58	.30	17	1470	

Job Name:	Model CO Concentric-Supply/Return (T-bar grid units)		
Location:			
Architect:	Drawn By: CLJ	Date: 3-10-03	Rev. Date: 12-1-10
Engineer:	Rev. no.: 9	Approved By: BGT	Dwg. no.: H-11
Contractor:			