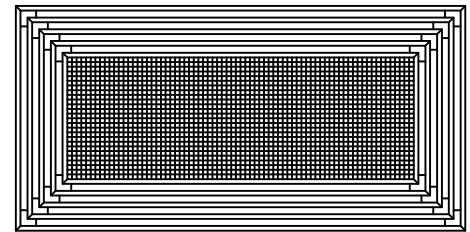
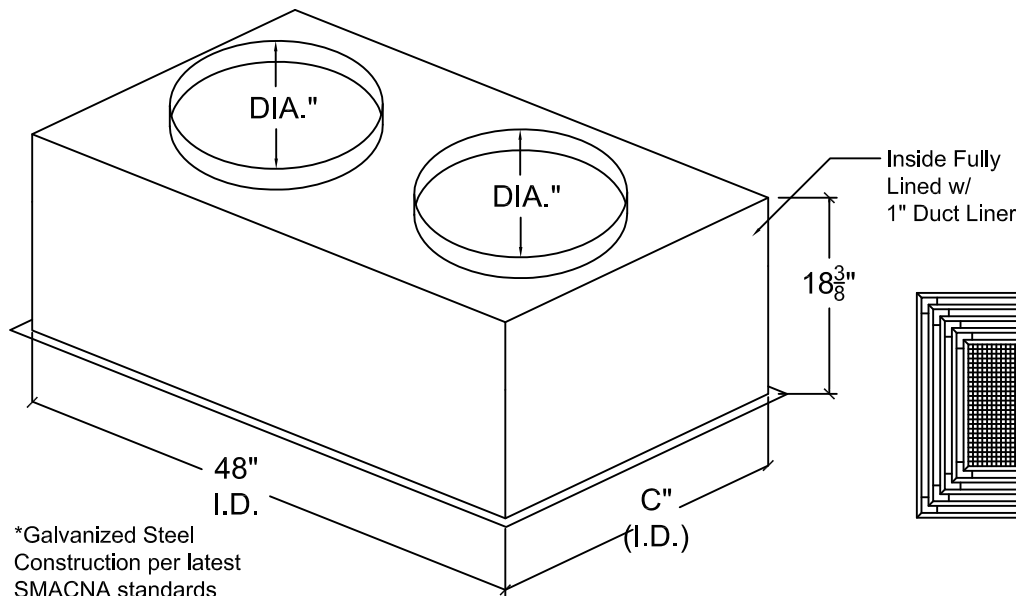
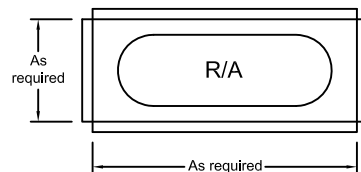
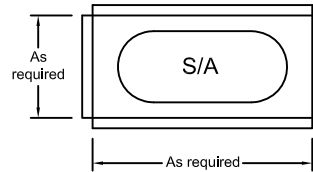
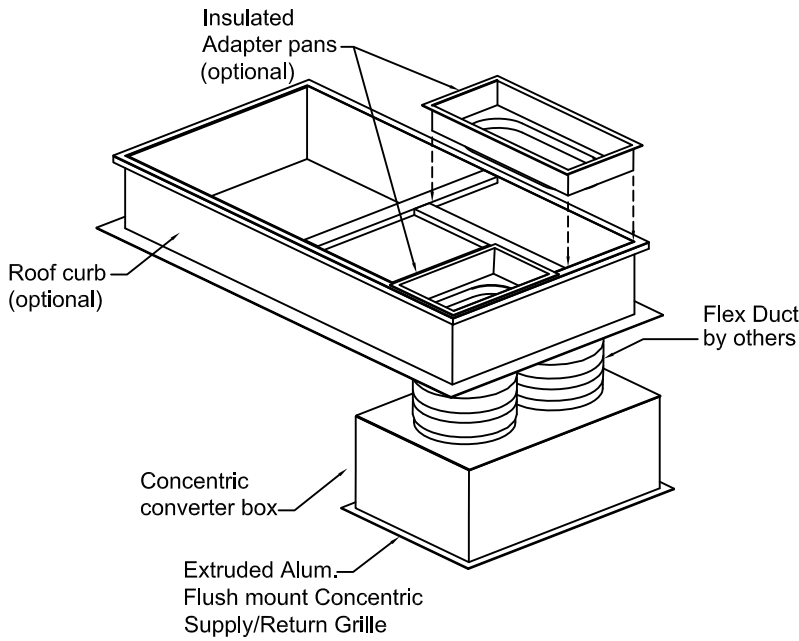


**Flush Mount Diffuser Plenums  
Concentric-Supply / Return**

**NOTES:**

1. Install insulated adapter pans before A/C unit is placed on curb.
2. Field baffles may be required for balancing.
3. Concentric converter box must be field supported.



**Bottom View**

\*Galvanized Steel  
Construction per latest  
SMACNA standards

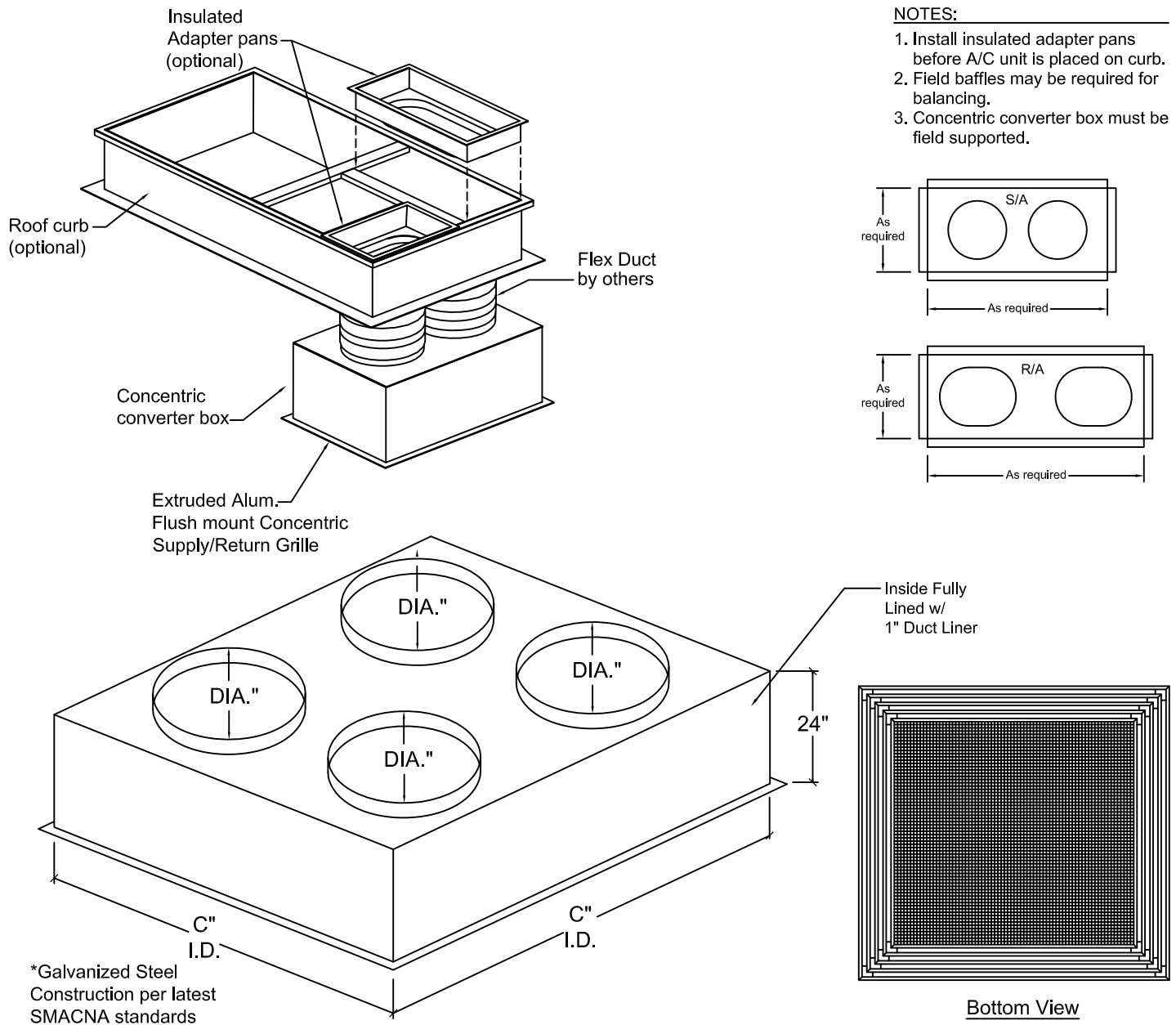
QTY.	MODEL#	"C"	RETURN	DIA.	CFM	THROW	S.P.	N.C.	neck vel.	OPTIONS
	CO-FM-12T	24	39" x 15"	14	1,200	7-13	.18	25	1123	
	CO-FM-16T	24	39" x 15"	16	1,600	9-18	.18	25	1145	
	CO-FM-20T	24	39" x 15"	18	2,000	15-22	.18	28	1132	
	CO-FM-30T	36	36' x 24"	20	3,000	17-30	.26	30	1375	

Job Name:	<b>Model CO-FM Flush Mount Concentric-Supply/Return</b>		
Location:			
Architect:	Drawn By: CLJ	Date: 7-10-12	Rev. Date: 1-30-18
Engineer:	Rev. no.: 2	Approved By: JAS	Dwg. no.: H-12
Contractor:			

**Flush Mount Diffuser Plenums  
Concentric-Supply / Return**

**NOTES:**

1. Install insulated adapter pans before A/C unit is placed on curb.
2. Field baffles may be required for balancing.
3. Concentric converter box must be field supported.



QTY.	MODEL#	"C"	RETURN	DIA.	CFM	THROW	S.P.	N.C.	neck vel.	OPTIONS
	CO-FM-40T	48	33" sq.	18	4,000	16-25	.18	32	1132	
	CO-FM-60T	60	45" sq.	20	6,000	27-39	.25	35	1375	
	CO-FM-80T	60	45" sq.	20	8,000	29-42	.47	38	1833	

Job Name:	Model CO-FM Flush Mount Concentric-Supply/Return		
Location:			
Architect:	Drawn By: CLJ	Date: 7-10-12	Rev. Date: 1-30-18
Engineer:	Rev. no.: 2	Approved By: JAS	Dwg. no.: H-13
Contractor:			