

INDUSTRIAL BUTTERFLY BACKDRAFT DAMPER

The Model I-900 is a heavy duty flanged frame style industrial backdraft damper. It is designed to control backflow and provide shut-off in HVAC or industrial process control systems. It is counterbalanced to operate in vertical or horizontal positions.

DIMENSIONS CHART

Inside Diameter	H	W	T
6-3/16"	1-1/4"	1-1/4"	1/8"
7-3/16"	1-1/4"	1-1/4"	1/8"
8-3/16"	1-1/4"	1-1/4"	1/8"
9-3/16"	1-1/4"	1-1/4"	1/8"
10-3/16"	1-1/4"	1-1/4"	1/8"
11-3/16"	1-1/4"	1-1/4"	1/8"
12-3/16"	1 1/2"	1 1/2"	1/8"
13-3/16"	1 1/2"	1 1/2"	1/8"
14-3/16"	1 1/2"	1 1/2"	1/8"
15-3/16"	1 1/2"	1 1/2"	1/8"
16-3/16"	1 1/2"	1 1/2"	3/16"
17-3/16"	1 1/2"	1 1/2"	3/16"
18-3/16"	1 1/2"	1 1/2"	3/16"
19-3/16"	1 1/2"	1 1/2"	3/16"
20-3/16"	1 1/2"	1 1/2"	3/16"
21-3/16"	1 1/2"	1 1/2"	3/16"
22-3/16"	1 1/2"	1 1/2"	3/16"
23-3/16"	1 1/2"	1 1/2"	3/16"
24-3/16"	1 1/2"	1 1/2"	3/16"
25-3/16"	2"	2"	3/16"
26-3/16"	2"	2"	3/16"
27-3/16"	2"	2"	3/16"
28-3/16"	2"	2"	3/16"
29-3/16"	2"	2"	3/16"
30-3/16"	2"	2"	3/16"
31-3/16"	2"	2"	3/16"
32-3/16"	2"	2"	3/16"
33-3/16"	2"	2"	3/16"
34-3/16"	2"	2"	3/16"
35-3/16"	2"	2"	3/16"
36-3/16"	2"	2"	3/16"
37-3/16"	2"	2"	3/16"
38-3/16"	2"	2"	3/16"
39-3/16"	2"	2"	3/16"
40-3/16"	2"	2"	3/16"
41-3/16"	2"	2"	3/16"
42-3/16"	2"	2"	3/16"
43-3/16"	2"	2"	3/16"
44-3/16"	2"	2"	3/16"
45-3/16"	2"	2"	3/16"
46-3/16"	2"	2"	3/16"
47-3/16"	2"	2"	3/16"
48-3/16"	2"	2"	3/16"
49-3/16"	2"	2"	3/16"
50-3/16"	2"	2"	3/16"
51-3/16"	2"	2"	3/16"
52-3/16"	2"	2"	3/16"
53-3/16"	2"	2"	3/16"
54-3/16"	2"	2"	3/16"
55-3/16"	2"	2"	3/16"
56-3/16"	2"	2"	3/16"
57-3/16"	2"	2"	3/16"
58-3/16"	2"	2"	3/16"
59-3/16"	2"	2"	3/16"
60-3/16"	2"	2"	3/16"

RATINGS:

Pressure: 10" w.g. - differential pressure - through 40"
 8" w.g. - differential pressure - through 48"
 5" w.g. - differential pressure - through 60"

Velocity: 5000 fpm laminar flow
 3000 fpm turbulent flow

Temperature: 250° F

STANDARD CONSTRUCTION:

Flange: Angle Rings

Blades: Aluminum 11 ga. through 24"
 8 ga. through 50"
 6 ga. through 60"

Spring Hinges: Painted steel with S.S. inner tension spring (adjustable)
 sizes 6"-14" dia. (single blade w/ one hinge)

Finish: Baked Powder Polyester (410°F)

Other: Rubber Bumpers

OPTIONS:

- Stainless steel construction (304 S.S. Only)
- Aluminum construction (w/ 304 S.S. Hinges)
- Omit bolt holes

Balancing Instructions:

See Decals (on each side of damper)

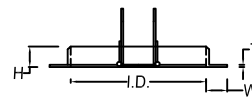
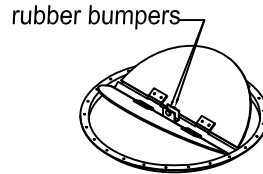
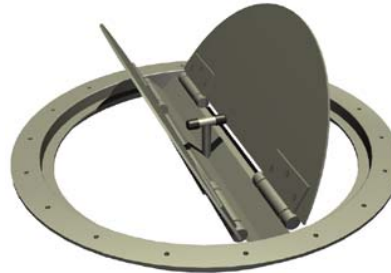
- Assist to Open
- Assist to Close

See 4 slots in angle ring side of damper.
 -Two per side

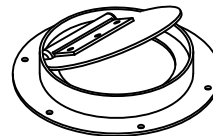
Use 5/32" hex wrench to adjust
 To relieve pressure, please depress spring with hex wrench. (clockwise adds more torque) (do not exceed six ratchet clicks)

Damper begins to open at _____ w.g.
 (please specify, additional charge may apply)

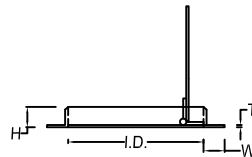
Not Ideal for Pressure below 2"



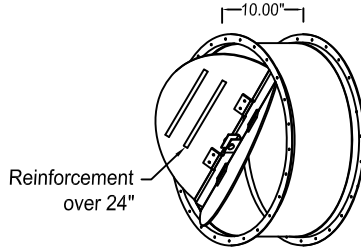
Model I-900-F



Model I-900-DF (double flanged)

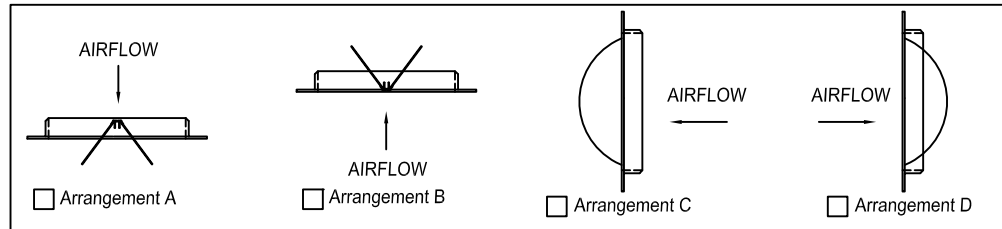


Model I-900-F (single blade sizes 6"-14")



Model I-900-DF (double flanged)

Please Verify air flow arrangement:



Job Name:

Location:

Architect:

Engineer:

Contractor:

Model I-900

DRAWN BY:

CLJ

REV. NO.

20

DATE:

6-1-99

APPROVED BY:

BGT

REV. DATE:

2-28-13

DWG. NO.:

F-25