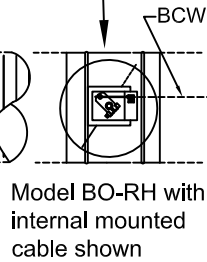
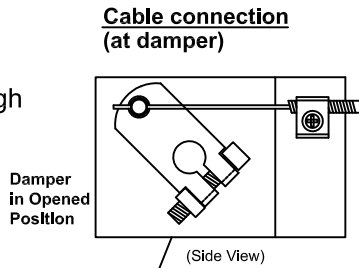
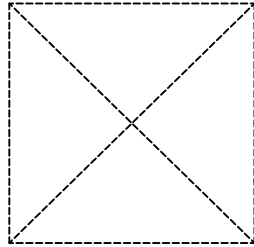
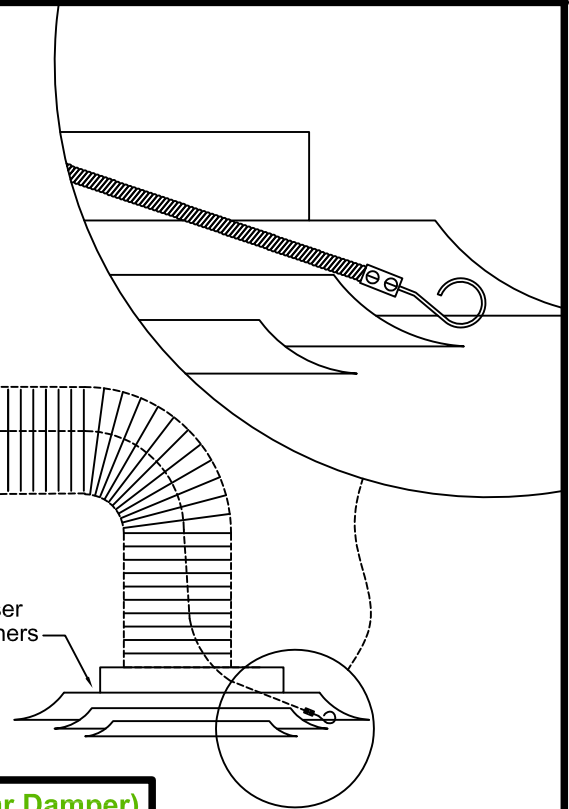


Application/Design:

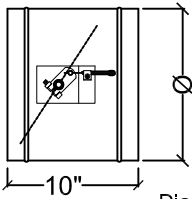
The Diffuser/Grille Balancing Bowden Cable System was developed for air balancing through the face of a diffuser with simple push-pull adjustments at a looped cable end.



Diffuser by others



Model BO-RH (Round Damper)



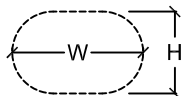
Features:

- Frame:** 24 ga galvanized steel (4" -10"Ø)
- Frame:** 20 ga galvanized steel (12" -20" Ø)
- Blade:** 24 ga galvanized steel (4" -10"Ø)
- Blade:** 20 ga galvanized steel (12"-20"Ø)
- Bearings:** Nylon 6/6 molded synthetic
- Axles:** Zinc Plated Steel pins

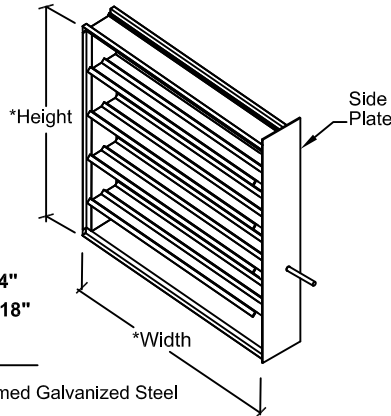
Options:

- Aluminum Construction
- Stainless Steel Construction
 - 304 stainless
 - 316 stainless
- Cable mount location
 - Internal (in duct)
 - External

- Oval Damper
- W = _____"
- H = _____"



Model BO-110H (Rectangular Damper)



*Undersized 1/4"
 Max Size: 24"x18"

Features:

- Frame:** Rollformed Galvanized Steel
- Blade:** 4"-7" wide, 16ga. Galvanized Steel
- Bearings:** Nylon 6/6 molded synthetic
- Axles:** 3/8" square plated steel
 No jamb seals
- Side Plate:** 6-1/4" x (ht. +1") x 18 ga galv. steel

Options:

- Cable mount location
 - Internal (in duct)
 - External

RECOMMENDED SPECIFICATIONS

- A. Remote control system shall provide means of balancing airflow in ductwork through grilles or diffusers
- B. The contractor shall install damper in ductwork and run cable through the grille or diffuser.
- C. The Diffuser/Grille Balancing Bowden Cable System shall be manufactured by United Energetech Corporation.

BCW - Bowden Control Wire
 (All 303 Stainless Steel)

Due to continuing research, United Energetech reserves the right to change specifications without notice.

Job Name:	DRAWN BY:	DATE:	REV. DATE:
Location:	CLJ	4-20-12	8-22-12
Architect:	REV. NO.	APPROVED BY:	DWG. NO.:
Engineer:	1		E-14a
Contractor:			