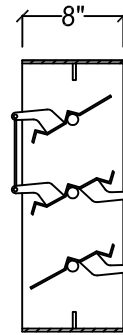
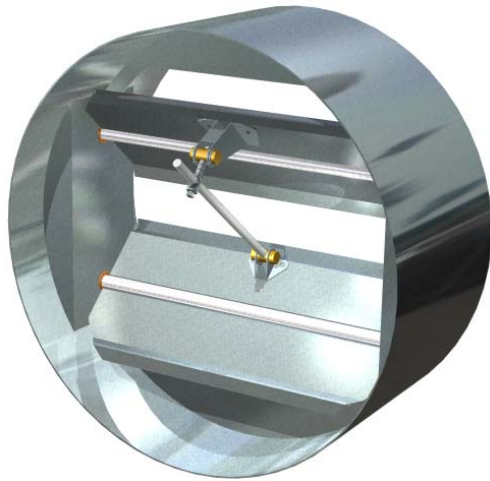
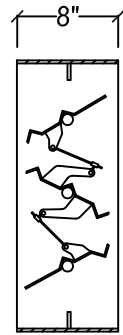


The Model R-PB & R-OB was developed to maintain a more even airflow through the duct system.



MODEL R-PB
 (parallel blade)



MODEL R-OB
 (opposed blade)

approx. 1/4" o.d. undersized

STANDARD FEATURES:

- FRAME:** 16 ga galvanized steel, 8" deep
- BLADES:** 16 ga galvanized steel
- BEARINGS:** 1/2" dia. self lubricating porous bronze
- BEARING PINS:** 1/2" x 2" long plated steel rods
- HARDWARE:** Plated brackets, brass pivots, 1/4" dia. steel rods
- CONTROL ROD:** 1/2" x 9" long plated steel
- FINISH:** galvanized
- MAX. TEMP.:** 200°F
- MAX. VELOCITY:** 2000 FPM
- MIN. SIZE:** 12" Ø
- MAX. SIZE:** 44" Ø

OPTIONS:

- Blade seals (EPDM) 180°F
- #304 stainless steel (including linkage)
- Actuators
- Powder coated (epoxy)
- Powder coated (polyester)

Job Name:	<input type="checkbox"/> MODEL R-PB, R-OB		
Location:			
Architect:			
Engineer:	DRAWN BY: CLJ	DATE: 2-6-04	REV. DATE: 10-26-10
Contractor:	REV. NO. 2	APPROVED BY: BGT	DWG. NO.: B-6