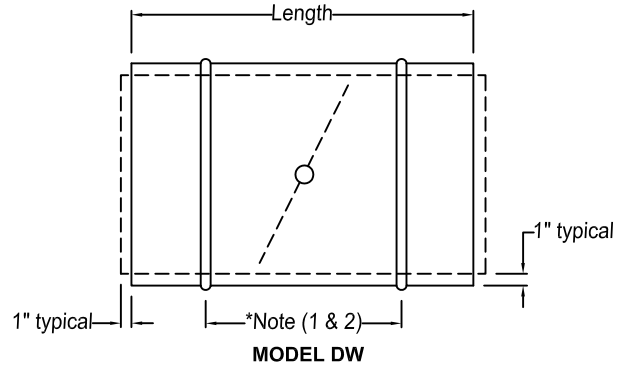


**DUAL WALL DAMPERS**  
**For Spiral Duct**

The MODEL DW is an insulated galvanized steel balancing damper for spiral duct. It is easy to install, seal, and becomes part of the duct work.

I.D. Diameter	Body Length	Exterior Body	Interior Body (solid)	Blade	Shaft
4-10"	8"	18 ga.	18 ga.	18 ga.	1/2"Ø
12-24"	8"	18 ga.	18 ga.	16 ga.	1/2"Ø
25-34"	8"	16 ga.	18 ga.	16 ga.	1/2"Ø
35-42"	8"	*14 ga.	18 ga.	16 ga.	3/4"Ø
43-52"	8"	*12 ga.	16 ga.	14 ga.	3/4"Ø
53-66"	8"	*10 ga.	16 ga.	12 ga.	3/4"Ø



Approximately 1/8" O.D. & I.D. undersize

Note: Both damper bodies fit inside of spiral duct (male connection)

\*Note (1) 5-7/16" - 4" Thru 10"  
 7-7/16" - 12" Thru 66"

\*Note (2) Seal Bead Not Available above 35".

**BEARING:** Interior and Exterior Body: Bronze oilite

**INSULATION:** Fiberglass



**VARIATIONS:**

- Heavier Gauge Construction
- Stainless Steel Body, Blade, Shaft, and Bearing
- All Aluminum Construction w/ Bronze Oilite Bearing
- Hand Quadrant
- Actuator
- Low leakage Blade Gasket

Job Name:
Location:
Architect:
Engineer:
Contractor:

**MODEL DW**

see dwg. B-8 for performance data

DRAWN BY: CLJ	DATE: 3-20-00	REV. DATE: 1-14-11
REV. NO. 8	APPROVED BY: BGT	DWG. NO.: <b>B-5</b>