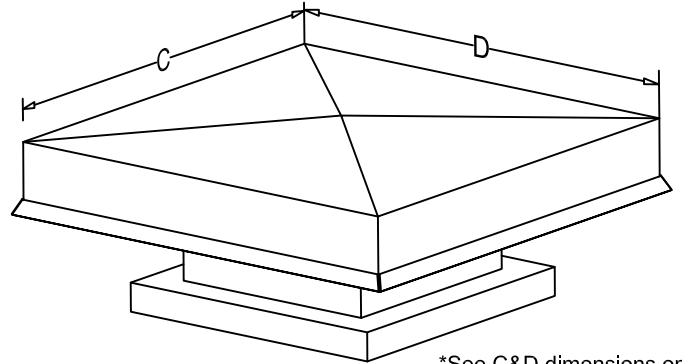


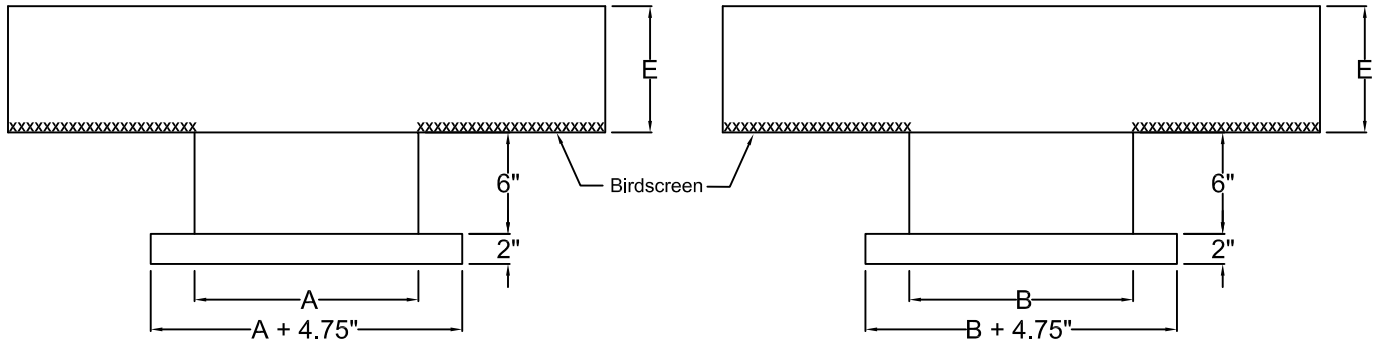
# Ventilator Hoods

## STANDARD SPECIFICATIONS

- HOOD:** 16 ga. (.052") Mill Finish Aluminum
- BASE SECTION:** 13 ga. (.090") Mill Finish Aluminum
- BIRDSCREEN:** 1/2" x 1" (.051") Flattened Aluminum (2B)
- FINISH:** Standard Mill
- MINIMUM SIZE:** 12" x 12"
- MAXIMUM SIZE:** 60" x 120"
- FRAMING:** Under 12 Square Feet Hood Area:  
 1-1/2" x 1-1/2" x .125" 6063-T6 Extruded Aluminum Angle - All Welded  
 12 Sq. Ft. through 40 Sq. Ft.:  
 1-1/2" x 1-1/2" x .25" 6063-T6 Extruded Aluminum Angle - All Welded



\*See C&D dimensions on following pages



\*These drawings are for dimensional purposes and may not represent actual construction.

### Options

- Insulated Internal Hood
  - Anti-Condensate Coating
  - 1" Fiberglass Insulation
- Hinged Lid (MAX 60" x 60" Throat)
- Insect Screen
- Roof Pitched - ( )/12"
- Galvanized Steel Construction
- 304 Stainless Steel Construction
- Powder Coating
  - Polyester
  - Fluoropolymer 70%
- Dampers - Backdraft or Motor Operated
- Filter Racks
- Heavier Construction
- Additional Throat Height
- Hood Tie Downs (125 mph wind)

Tag	Qty.	A	B	Hood-Throat Ratio	Options

Job Name:	<input type="checkbox"/> <b>MODEL GEV (Exhaust)</b>		<input type="checkbox"/> <b>MODEL GIV (Intake)</b>	
Location:	<input type="checkbox"/> 1:1 Ratio (100%) <input type="checkbox"/> 1:5 Ratio (150%)		<input type="checkbox"/> 1.75:1 Ratio (175%) <input type="checkbox"/> 2:1 Ratio (200%)	
Architect:	DRAWN BY:	DATE:	REV. DATE:	
Engineer:	SRB	12-03-99	8-31-09	
Contractor:	REV. NO.	APPROVED BY:	DWG. NO.:	
	17	SDC	<b>F-6</b>	